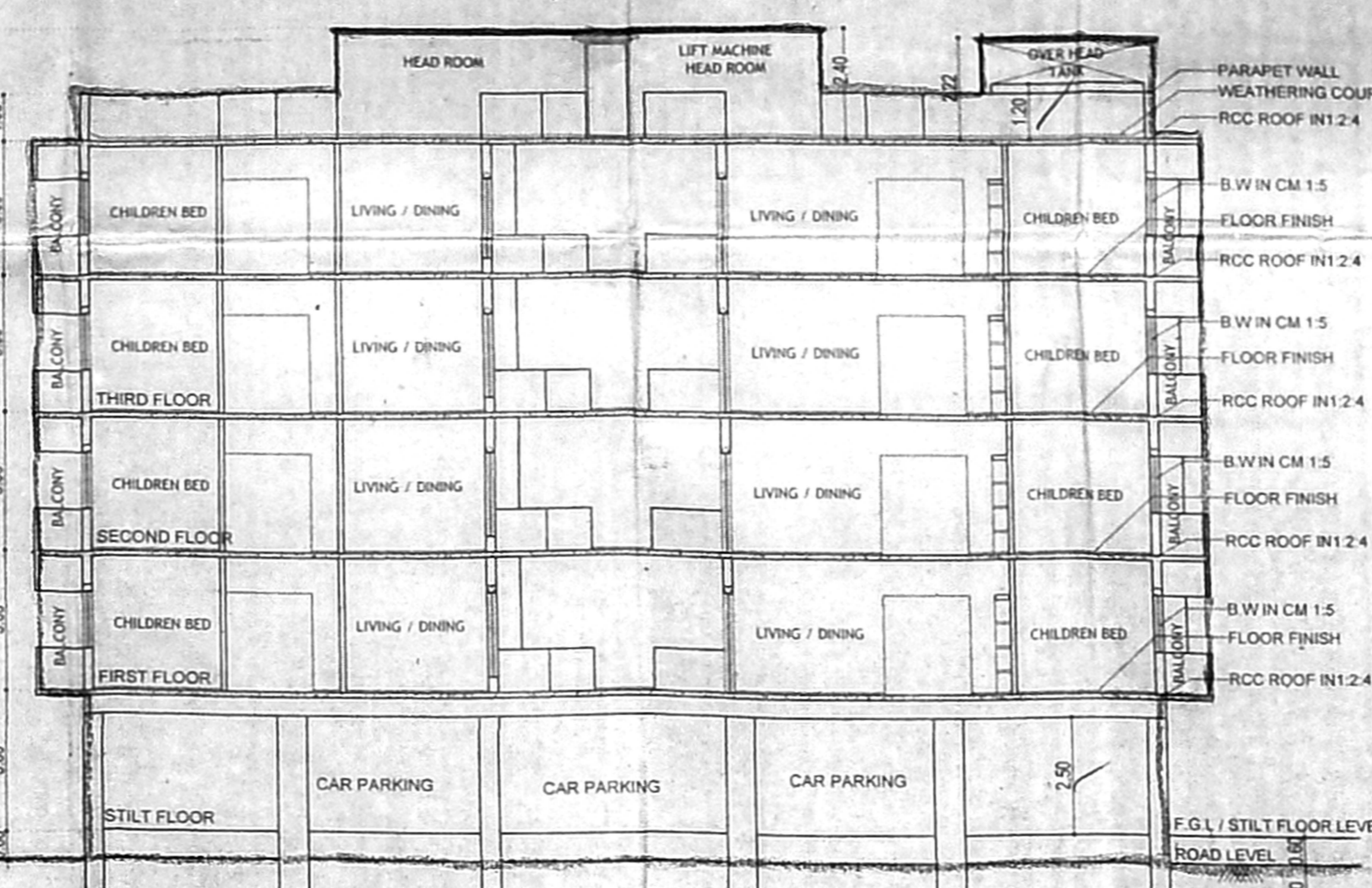
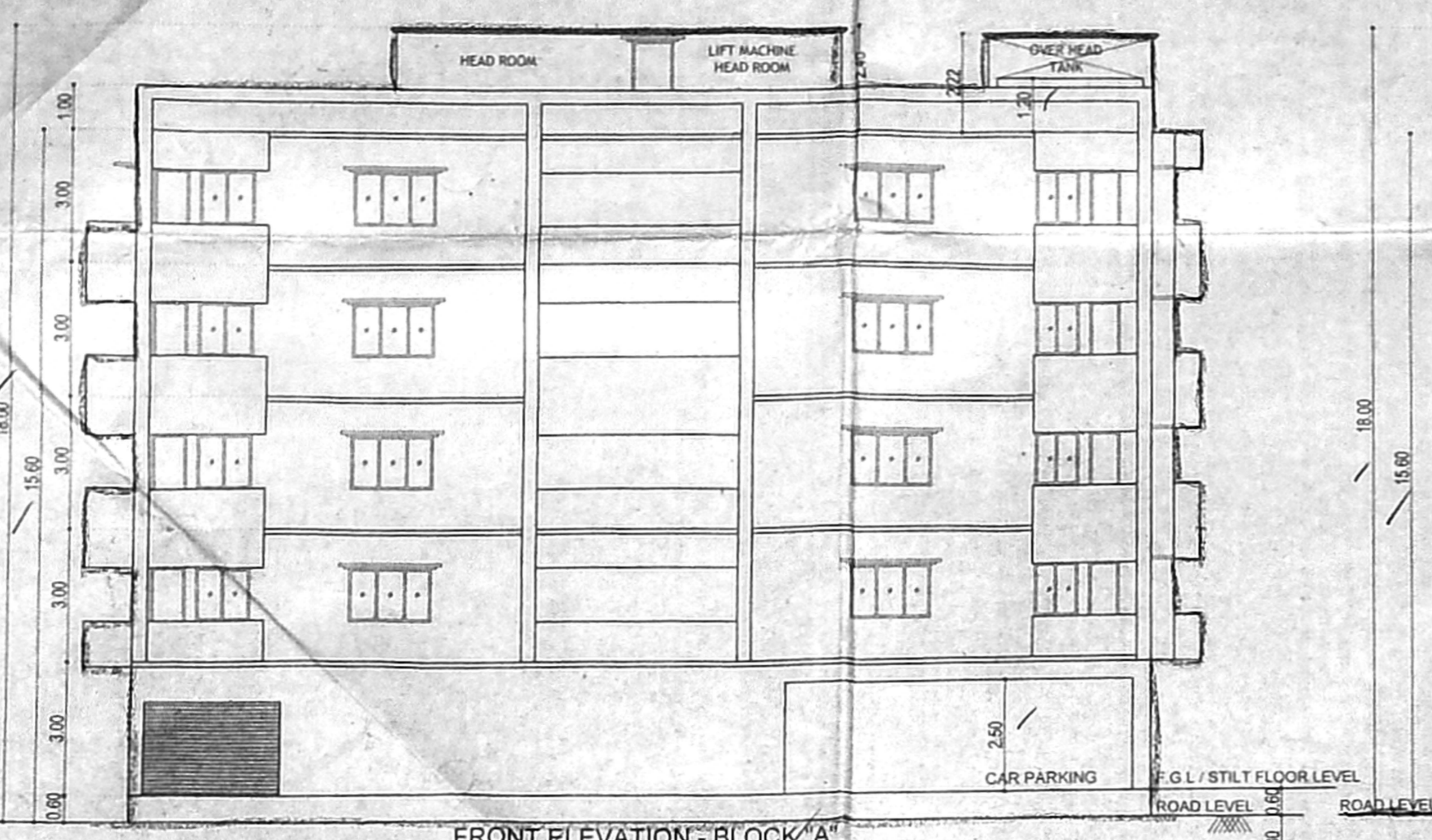


FLOORS	5% BALCONY NON FSI	FSI AREA
FIRST FLOOR	26.70	682.75
SECOND FLOOR	26.70	682.75
THIRD FLOOR	26.70	682.75
FOURTH FLOOR	21.34	542.41
TOTAL	101.44	2590.66

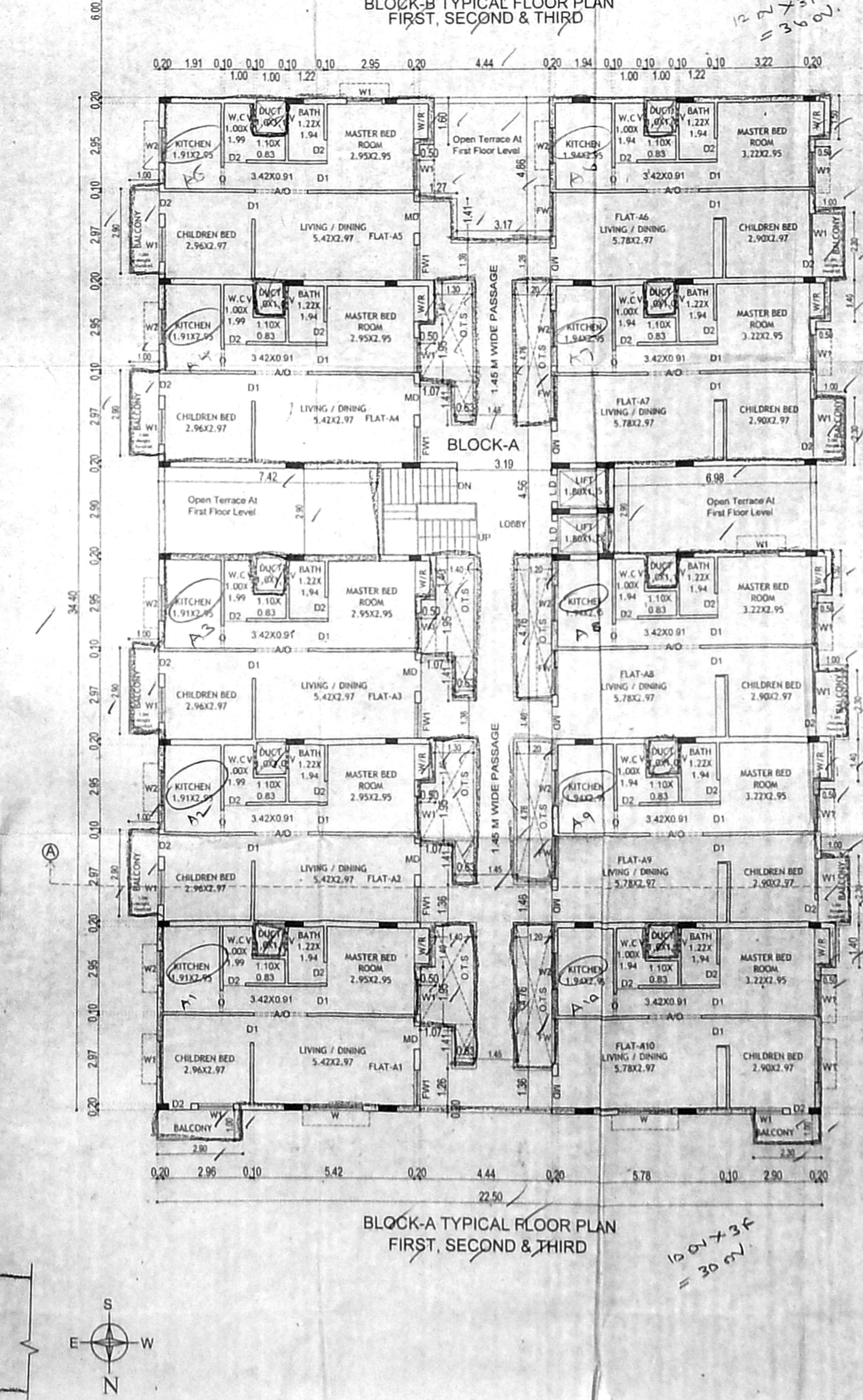
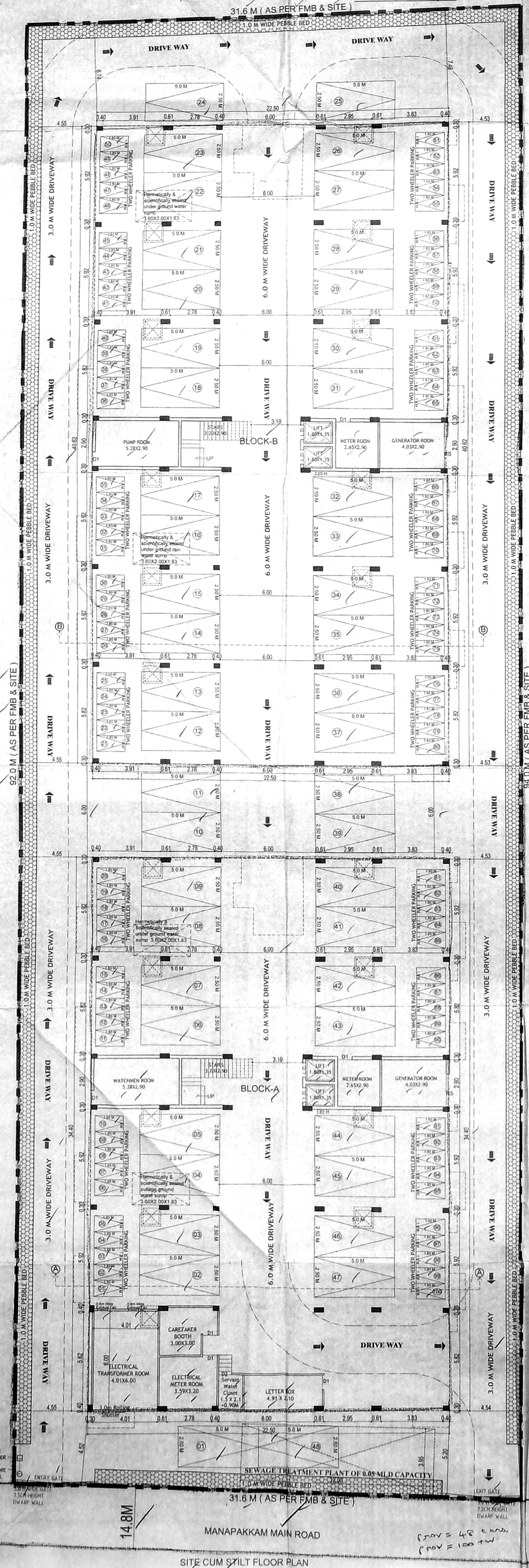
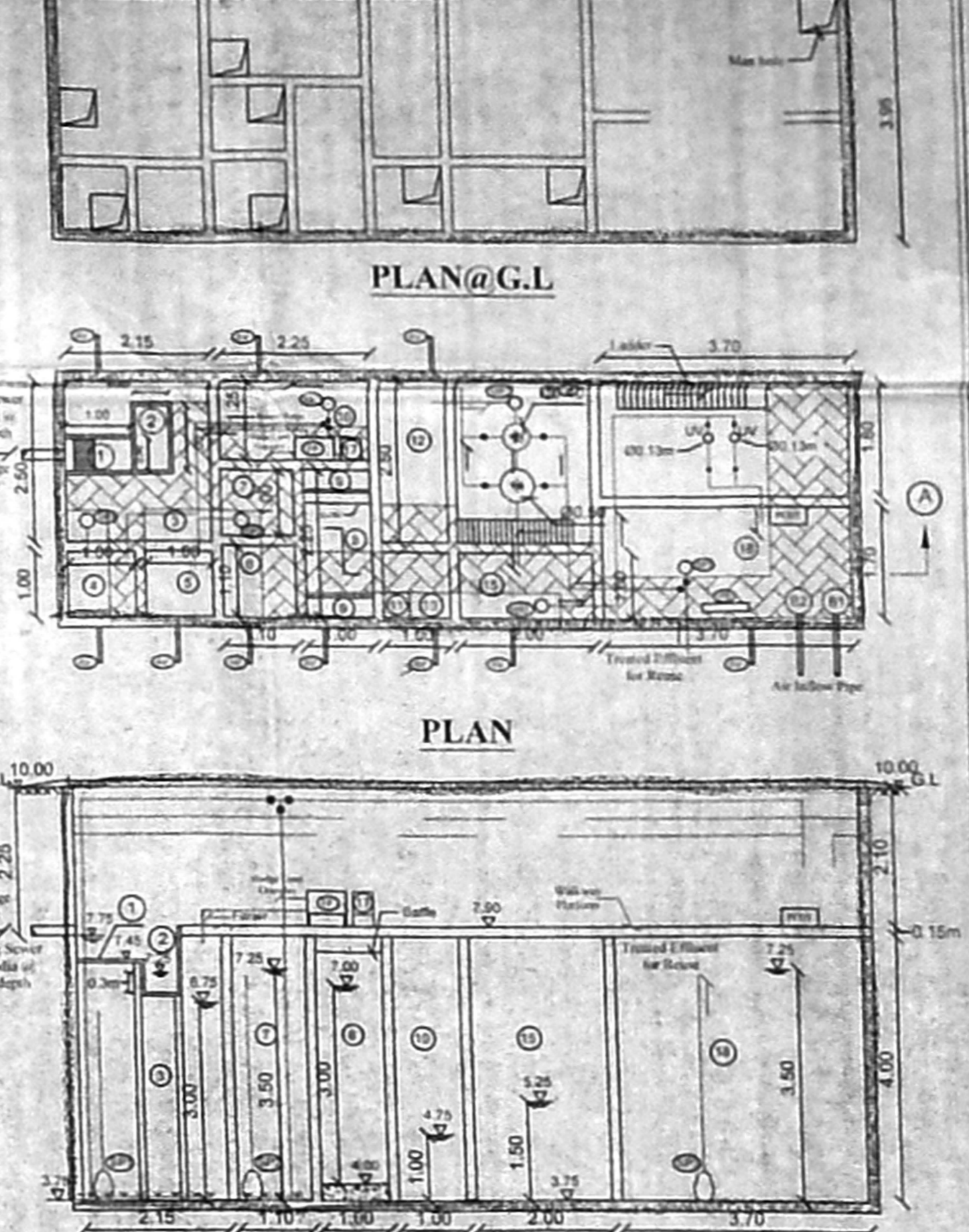
FLOORS	NON FSI	FSI AREA
FIRST FLOOR	32.08	770.08
SECOND FLOOR	32.08	770.08
THIRD FLOOR	32.08	770.08
FOURTH FLOOR	28.47	683.71
TOTAL	122.71	2993.95

GRAND TOTAL FSI AREA: 5491.61
 GRAND TOTAL 5% NON FSI BALCONY AREA: 224.15
 CAR PARKING PROVIDED = 48 nos
 TWO WHEELERS PARKING PROVIDED = 100 NOS
 NUMBER OF DWELLINGS = 84 nos

செவ்வாய்க்கிழமை
 2023.08.15
 10:30 AM



SEWAGE TREATMENT PLANT OF 0.05 MLD CAPACITY



DESIGN DATA

No. of Flats	84 nos
Proposed Occupants	420 nos
Rate of water supply	1.50 lpcd
Water Consumption	56700 L/D
Sewage generated	45360 L/D
Proposed capacity of STP	0.05 MLD

PARAMETERS CHARACTERISTICS

Parameter	Value	Characteristic of 1st year effluent	Value
1. Biochemical Oxygen Demand	350 mg/l	1	100 mg/l
2. Chemical Oxygen Demand	700 mg/l	2	500 mg/l
3. Total Suspended Solids	400 mg/l	3	100 mg/l
4. Total Phosphorus (as P)	40 mg/l	4	10 mg/l
5. Total Nitrogen (as N)	120 mg/l	5	30 mg/l
6. Fecal Coliform	10 ⁷ MPN/100 ml	6	10 ⁴ MPN/100 ml
7. pH	5.5 - 8.5	7	6.5 - 8.5

PLAN SHOWING THE PROPOSED CONSTRUCTION GROUP DEVELOPMENT TWO BLOCKS OF STILT + 3 FLOORS, 4TH FLOOR/PARTY LIG GROUP OF RESIDENTIAL BUILDING WITH 84 DWELLING UNITS AT MANAPAKKAM MAIN ROAD, KOLAPAKKAM, CHENNAI. COMPRISED IN S. Nos. 26/1B1, 26/1B2 & 26/2B, OF KOLAPAKKAM VILLAGE, KUNDRATHUR PANCHAYAT UNION, ALANDUR TALUK, KANCHEEPURAM DISTRICT.

JOINERIES

R S	ROLLING SHUTTER	3.00X2.50
M D	MAIN DOOR	1.07X2.13
D	DOOR	1.00X2.13
D1	DOOR	0.91X2.13
D2	DOOR	0.78X2.13
AO	AICH OPENING	1.80X2.13
O	OPENING	0.91X2.13
FW	FRENCH WINDOW	1.80X1.80
W	WINDOW	1.80X1.22
W1	WINDOW	1.22X1.22
W2	WINDOW	0.91X0.91
V	VENTILATOR	0.61X0.61
LD	LIFT DOOR	1.00X2.13

SITE CUM BLOCK-A & B STILT FLOOR PLAN, BLOCK-A & B TYPICAL FLOOR PLAN (FIRST, SECOND & THIRD), BLOCK-A & B SECTION ELEVATION

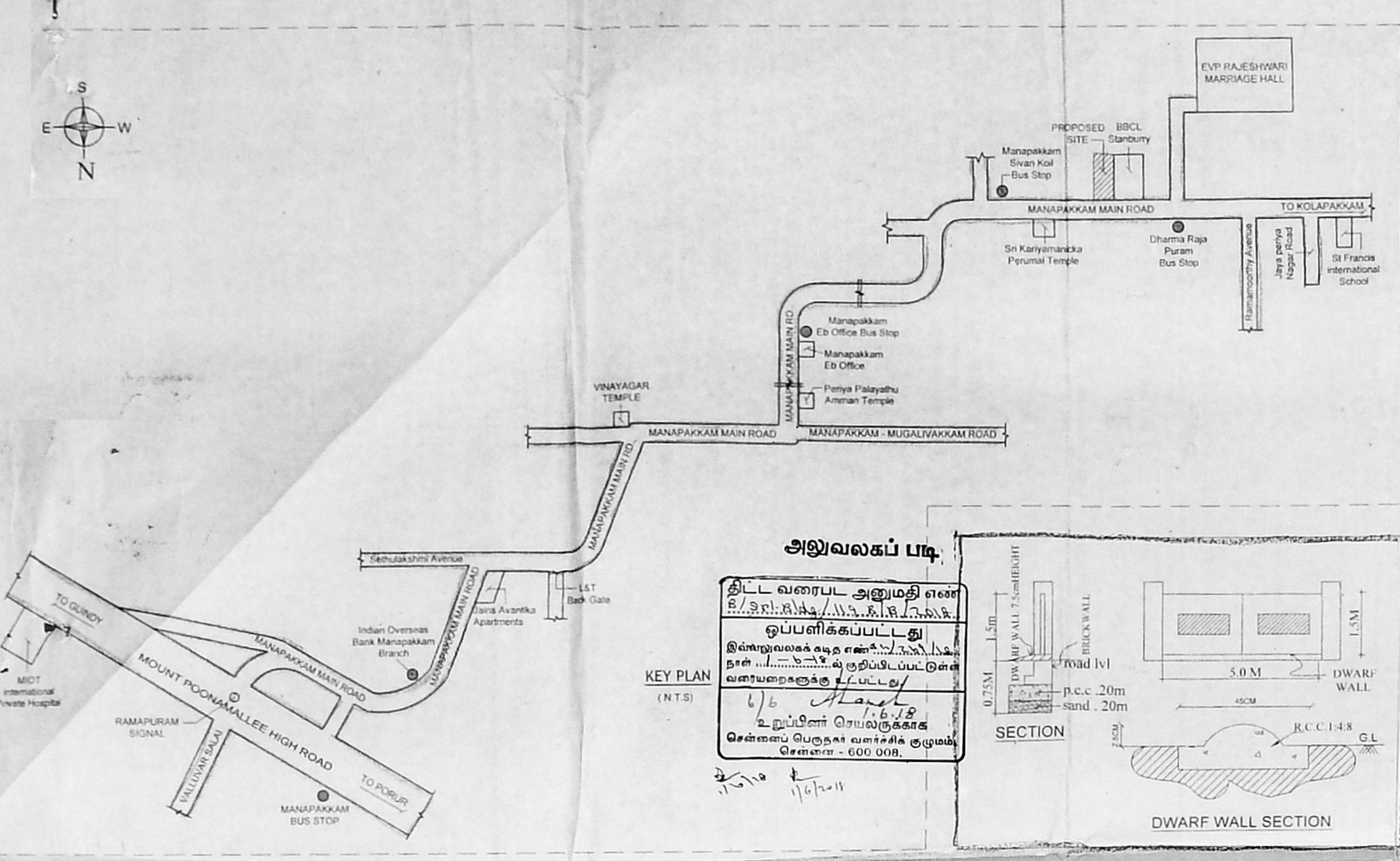
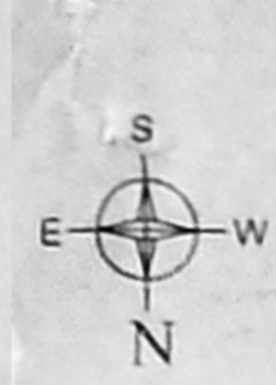
OWNER

R. Muthu

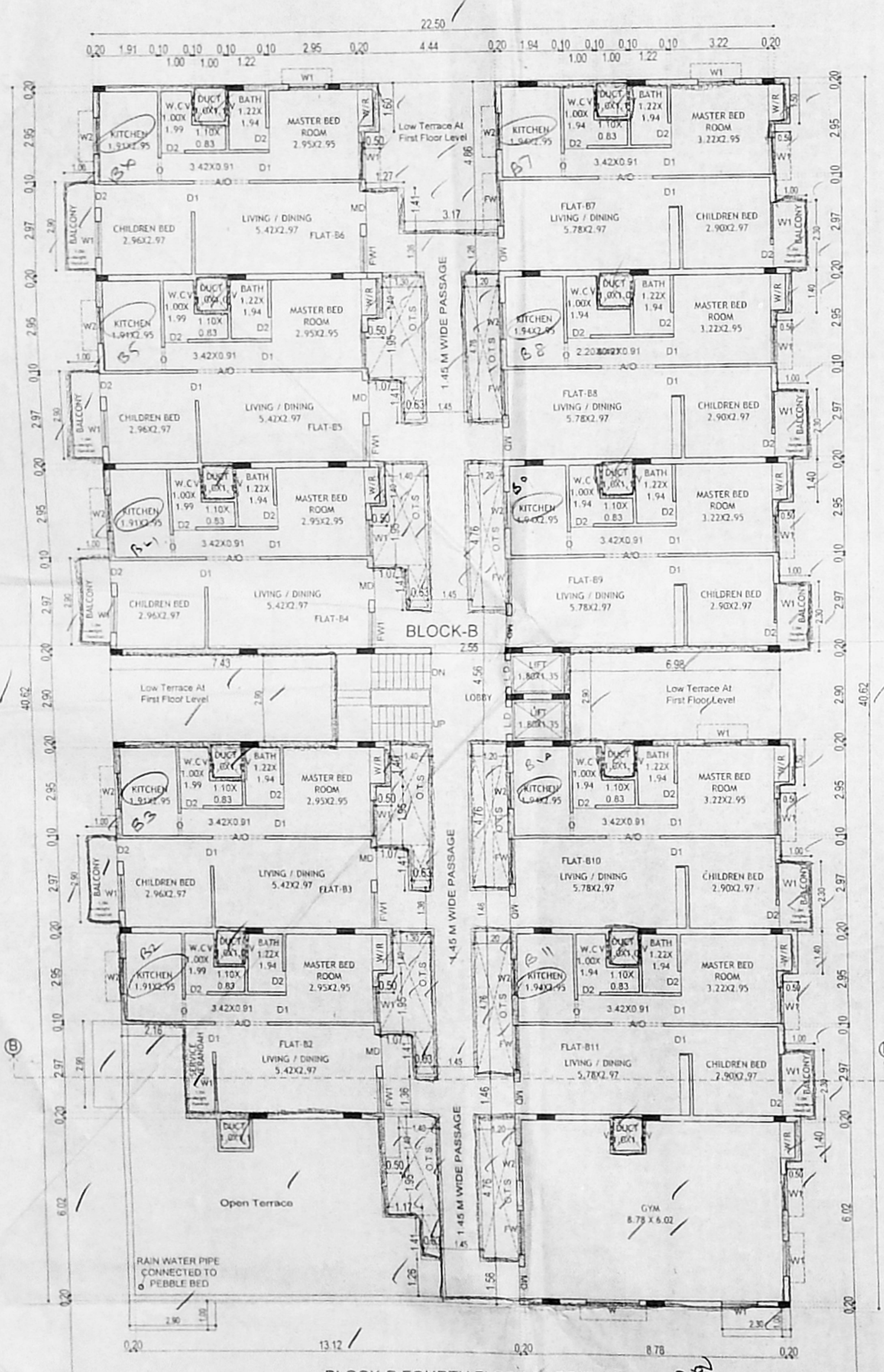
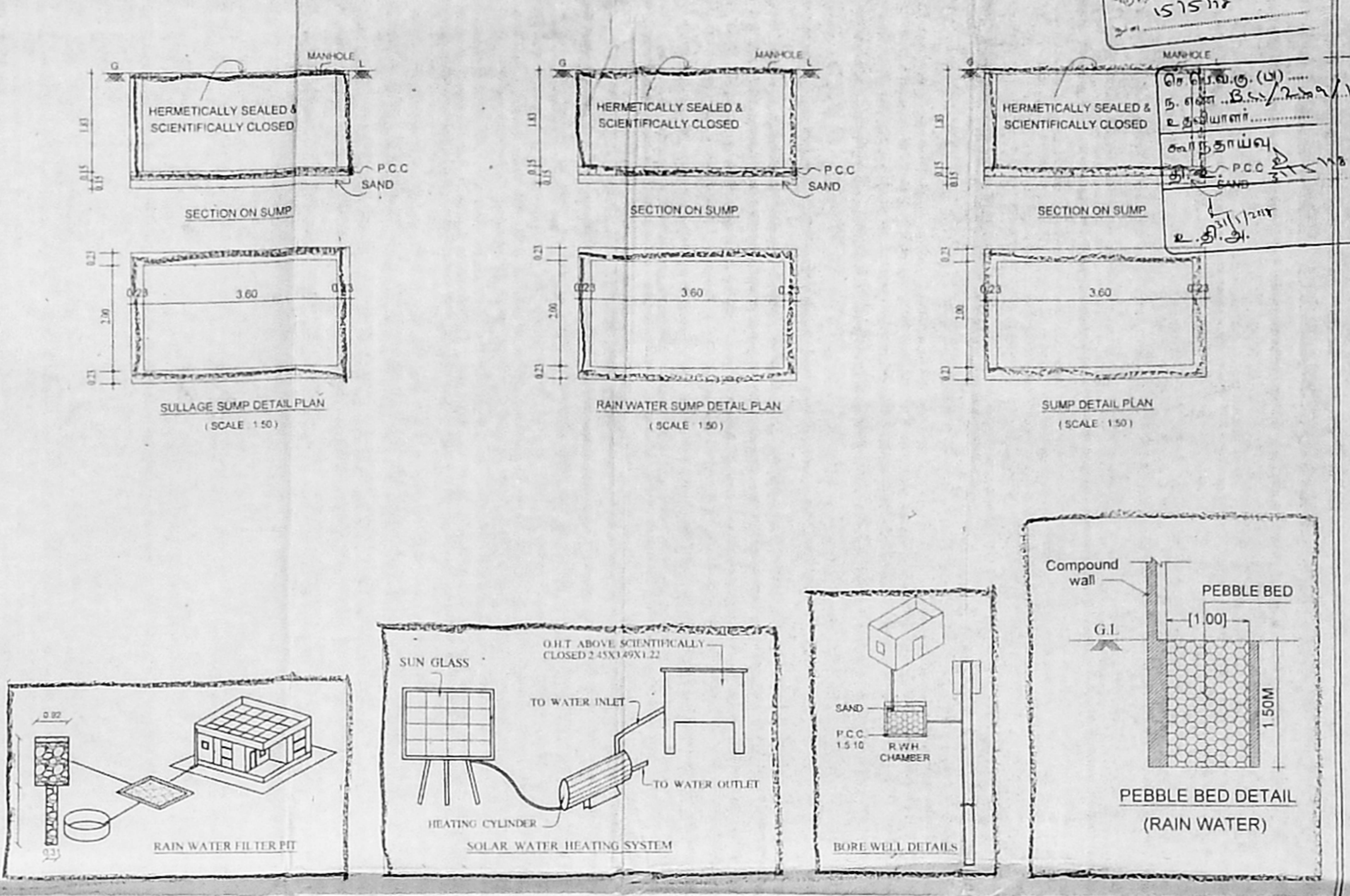
PHANU

A. S. PHANI KUMAR

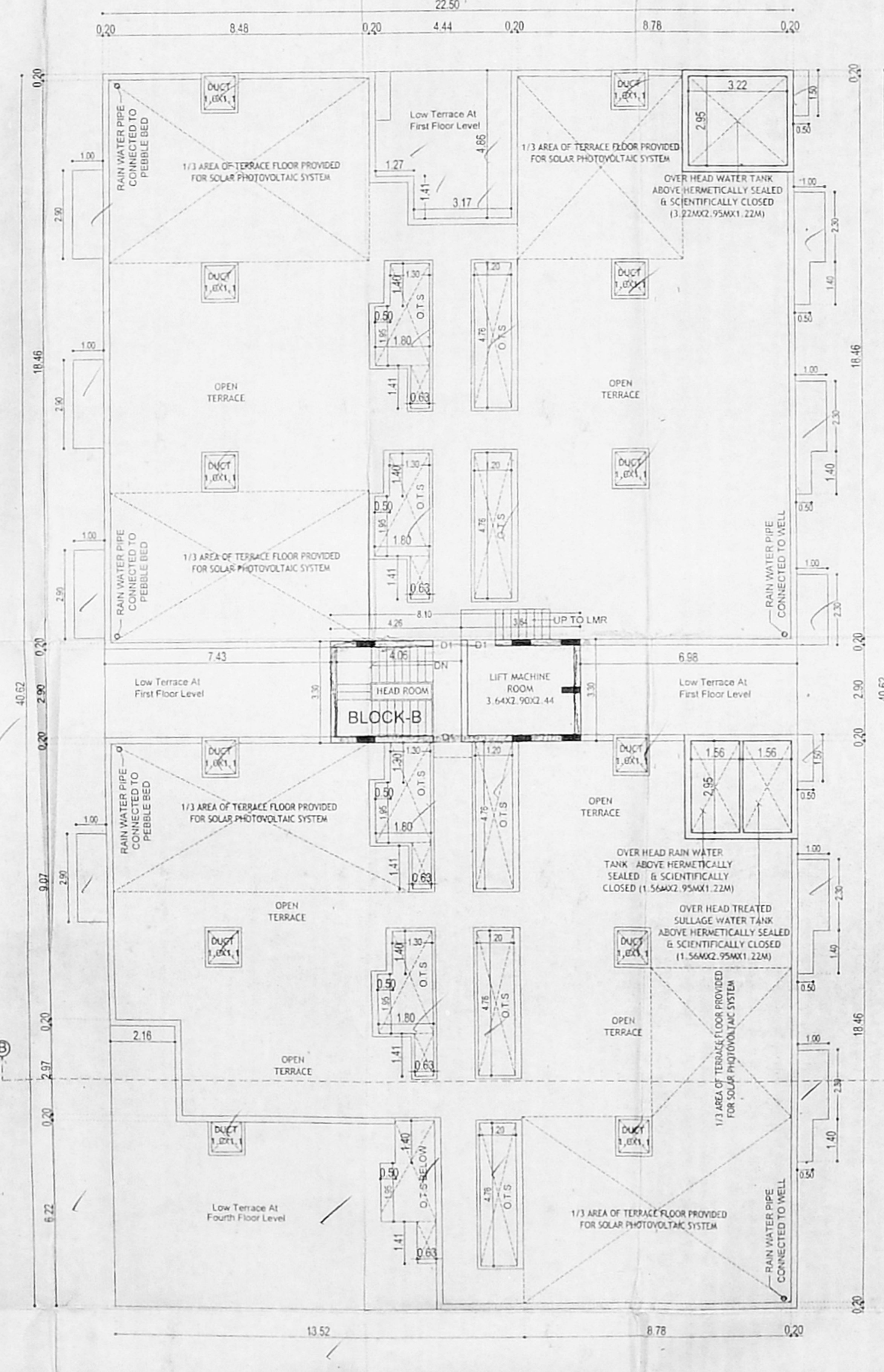
LICENSED ENGINEER



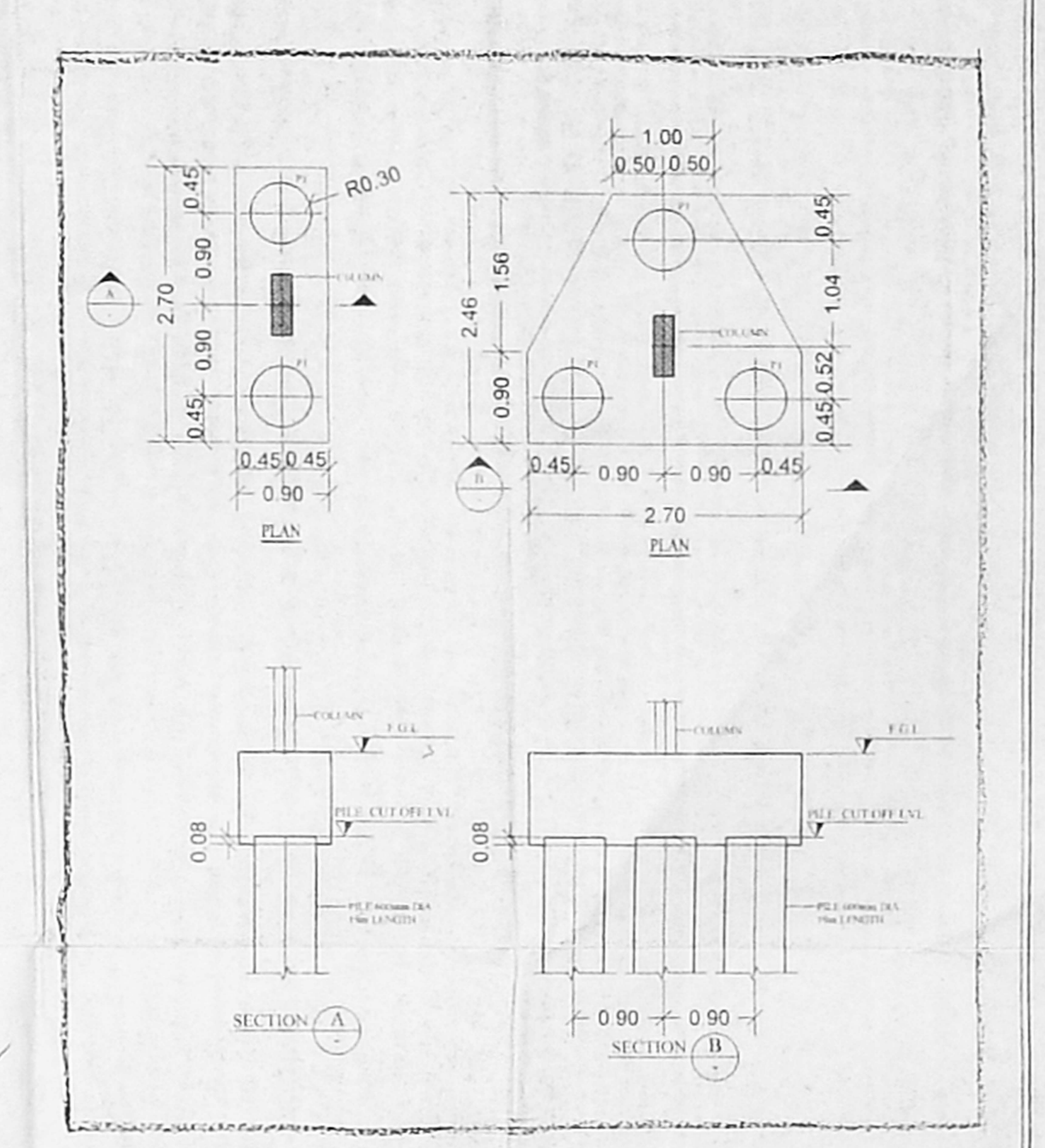
அலுவலகப் படி
 திட்ட வரைபட அனுமதி எண்
 E/2016/26/151/12
 குடியரசு அரசாங்கத்தின்
 இயக்குகை மற்றும் கட்டுமான
 அமைச்சுக்கு உட்பட்டது
 (1)6
 உட்கட்டுமான அலுவலகத்தின்
 சென்னை - 600 008



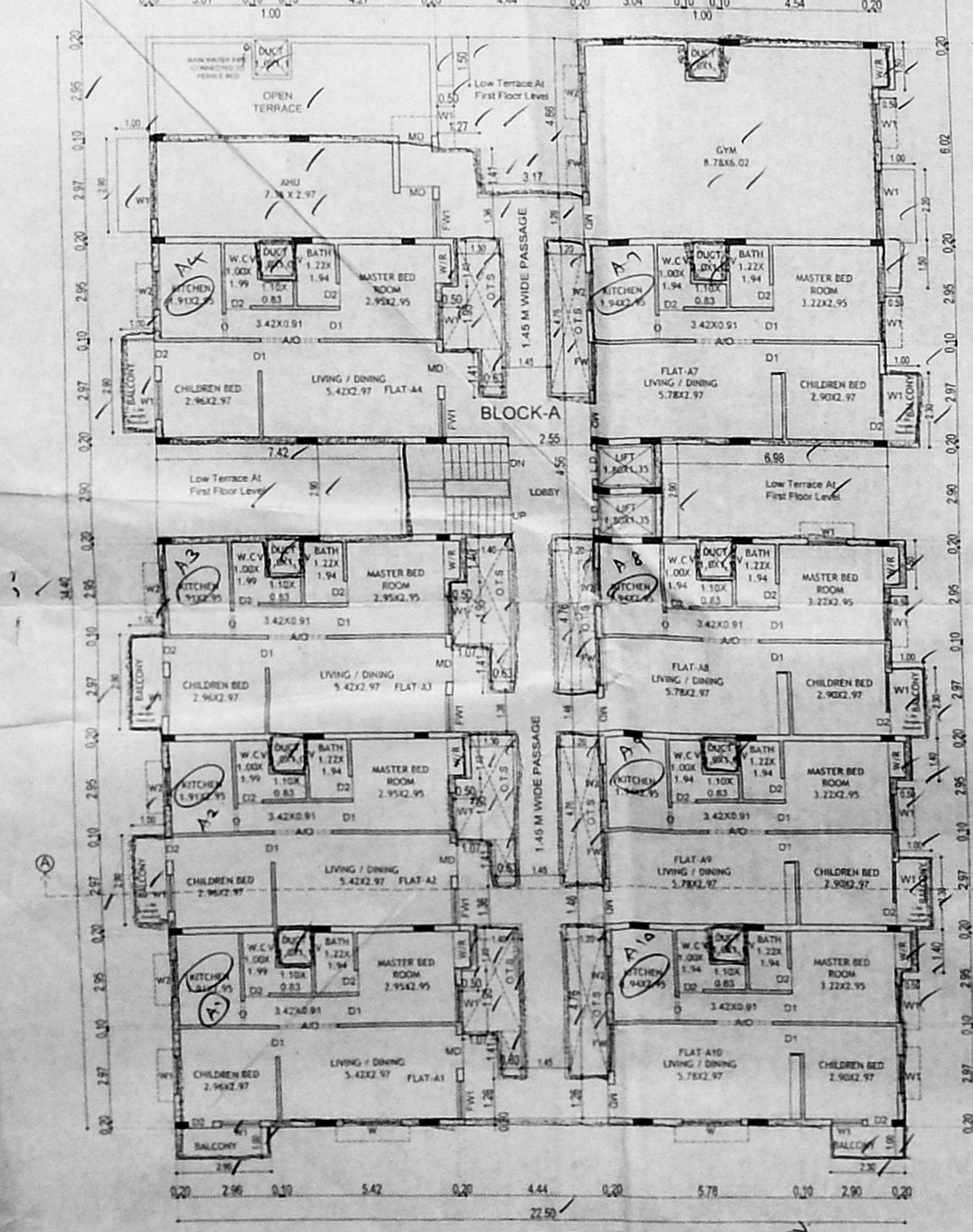
BLOCK-B FOURTH FLOOR PART PLAN



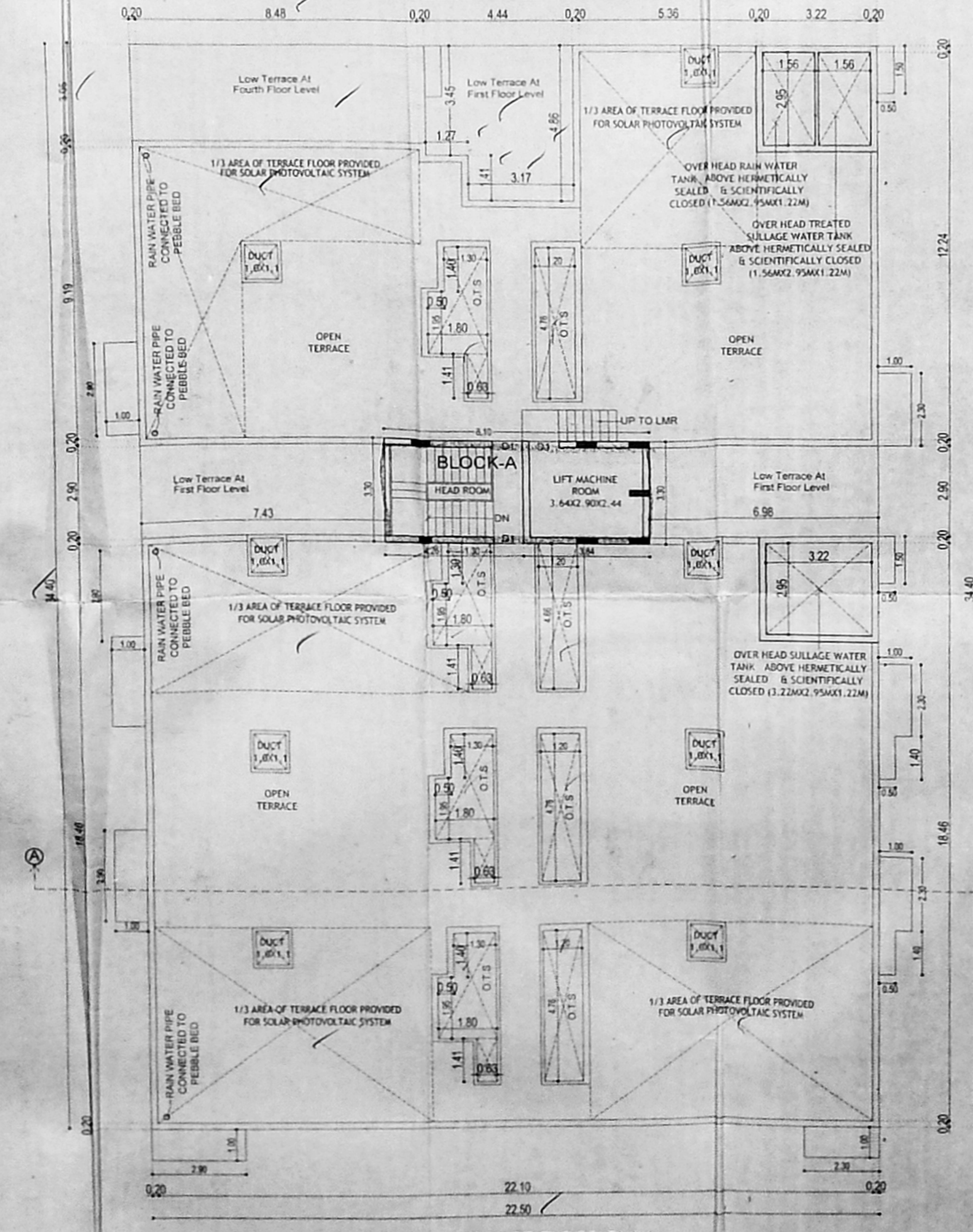
BLOCK-B TERRACE FLOOR PLAN



PLAN SHOWING THE PROPOSED CONSTRUCTION GROUP DEVELOPMENT TWO BLOCKS OF STILT + 3 FLOORS. 4TH FLOOR(PART) LIG GROUP OF RESIDENTIAL BUILDING WITH 84 DWELLING UNITS AT MANAPPAKKAM MAIN ROAD, KOLAPPAKKAM CHENNAI. COMPRISED IN S.Nos. 26/1B1, 26/1B2 & 26/2B, OF KOLAPPAKKAM VILLAGE, KUNDRATHUR PANCHAYAT UNION, ALANDUR TALUK, KANCHEEPURAM DISTRICT.

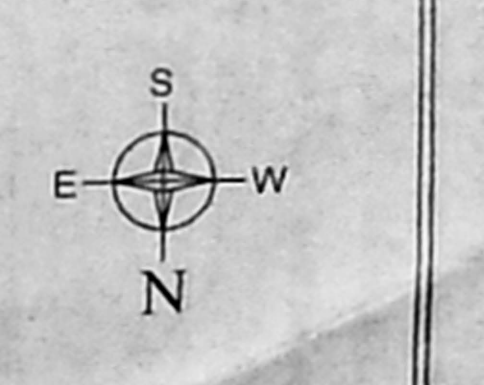


BLOCK-A FOURTH FLOOR PART PLAN



BLOCK-A TERRACE FLOOR PLAN

JOINERIES	
R.S. ROLLING SHUTTER	3.00X2.50
M.D. MAIN DOOR	1.07X2.13
D. DOOR	1.00X2.13
D1 DOOR	0.91X2.43
D2 DOOR	0.76X2.13
A/O ARCH OPENING	1.80X2.13
O OPENING	0.91X2.13
FW FRENCH WINDOW	1.80X1.80
W WINDOW	1.80X1.22
W1 WINDOW	1.22X1.22
W2 WINDOW	0.91X0.91
V VENTILATOR	0.61X0.61
L/D LIFT DOOR	1.00X2.13



BLOCK-A & B FOURTH FLOOR PLAN
BLOCK-A & B TERRACE FLOOR PLAN

OWNER

A. B.S. PHANI KUMAR
C.A. 2010/198721
A. B.S. PHANI KUMAR
A.C. PUNAM, HYDRABAD
DOB: 1973/08/22